

# Rotary Seal XSROTOM17

**Function:**

Rotary seals are designed to seal the pressurized hydraulic fluid against the atmosphere, preventing leakage and pollution of the environment or to transfer liquids and/or gases from a stationary part into or out of rotating machinery.

**Features:**

- Symmetrical, double acting one-piece seal with by rubber fabric firmly embedded elastomere part.
- Elastomer part with lubrication groove at the running surface.
- Highly wear-resistant
- Reliable static seal.

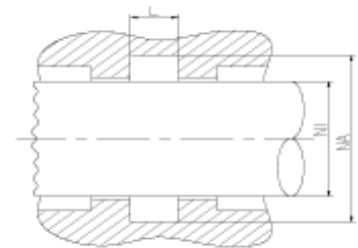
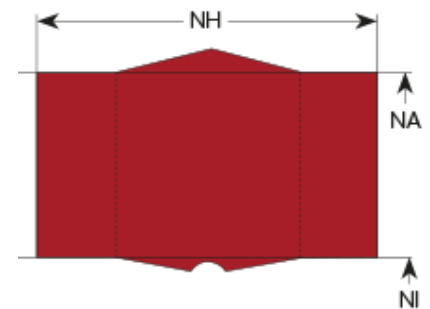
**Application:**

Reciprocating and swiveling pistons and rods in hydraulic cylinders, pivoting movements, revolving distributors, swivel joints.

Piston seal for double-acting cylinders.

Application in excavators, grabs and rotary transmisson generally.

**Notice:** For use in permant rotation please contact us.



**Seal housing recommendation:**

Tolerances	[mm]	
L	+ 0.2	
Ø NA	H 8	
Ø NI	f 7	

Surface roughness	Rtmax [µ]	Ra [µ]
Bottom of groove	≤ 10	≤ 1.8
Face of groove	≤ 15	≤ 3

Sliding surface	Rtmax [µ]	Ra [µ]
PU, elastomeres	≤ 2.5	≤ 0.1 - 0.5
PTFE	≤ 2	≤ 0.05 - 0.3

**Installation:**

Snap-in installation.