

Symmetrical Seal XSPRS25-27

Function:

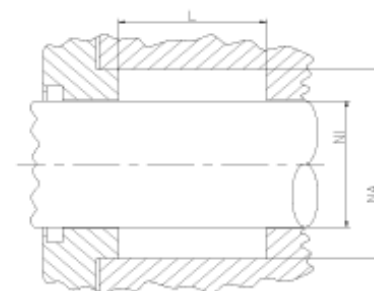
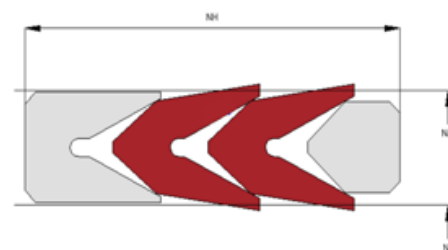
Symmetrical piston/rod seals are designed to seal the pressurized hydraulic fluid against the atmosphere or between two pressurized spaces.

Features:

- Symmetrical, single acting piston/rod seal, combined with pressure ring and support ring.
- Special lip geometry for packings out of PTFE or other non elastic materials.
- By adjusting the number of packings friction and leakage characteristics can be influenced.
- Designed for low pressure ranges up to 100 bar.
- Excellent static and dynamic sealing performance.
- Useable for short and long stroke lengths.
- High wear resistance.

Application:

- Reciprocating pistons/rods in hydraulic cylinders, plungers, etc. in the pharma, chemical or food industry, high temperature applications.
- Max. pressure 100 bar, max. speed 1.5 m/s.



Seal housing recommendation:

Tolerances	[mm]	
L < 10 mm	+ 0.2	
L ≥ 10 mm	+ 0.3	
Ø NA (rod groove)	H10	
Ø NI (rod diam.)	f 8	
Ø NA (cylinder diam.)	H9	
Ø NI (piston groove)	h10	

Surface roughness	Rtmax [µ]	Ra [µ]
Bottom of groove	≤ 6.3	≤ 1.6
Face of groove	≤ 15	≤ 3

Sliding surface	Rtmax [µ]	Ra [µ]
PU, elastomeres	≤ 2.5	≤ 0.1 - 0.5
PTFE	≤ 2	≤ 0.05 - 0.3

Installation:

Open housings are recommended, the axial contact force on the individual parts usually is generated by a spring element.