

# XSWR01A

**Function:**

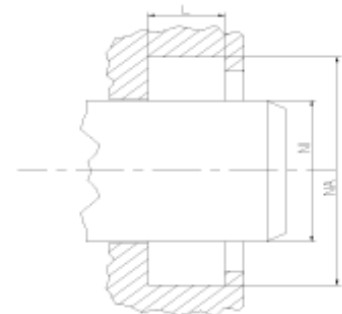
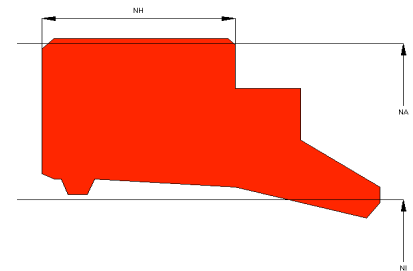
Wipers are designed to keep dust, dirt, sand and others off the rod and the sealing and guiding elements, avoiding abrasive damage caused by external contamination.

**Features:**

- The profile is designed with interference on the OD which provides a good static fit in the groove, preventing the entry of humidity and other contamination via the outside diameter.
- The support shoulder prevents tilting of the wiper.
- The design of the wiper lip supports the recirculation of the remaining oil film into the cylinder, whilst the exclusion of contamination is guaranteed.
- For housings acc. to ISO 6195-Type A.

**Application:**

Reciprocation rods in hydraulic cylinders, plungers.  
Max. pressure 0 bar, max. speed 4 m/s.

**Seal housing recommendation:**

Tolerances	[mm]	
L < 10 mm	+ 0.2	
L ≥ 10 mm	+ 0.3	
Ø NA	H11	
Ø NI	f 8	

Surface roughness	Rtmax [µ]	Ra [µ]
Bottom of groove	≤ 6.3	≤ 1.6
Face of groove	≤ 15	≤ 3

Sliding surface	Rtmax [µ]	Ra [µ]
PU, elastomeres	≤ 2.5	≤ 0.1 - 0.5
PTFE	≤ 2	≤ 0.05 - 0.3

**Installation:**

Snap-in installation.

When the cylinder can not be dismantled, the wiper can also be installed in cut version.  
In this case the diameter should be increased by 2-3%.