

Rod Seal XSRS16

Function:

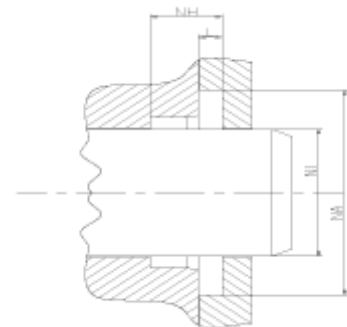
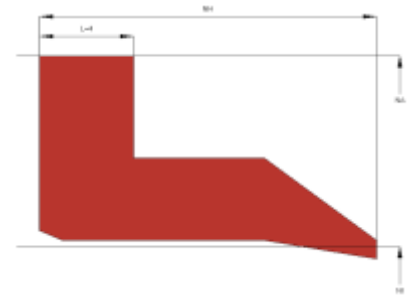
Rod seals are designed to seal the pressurized hydraulic fluid against the atmosphere or between two pressurized spaces.

Features:

- Asymmetrical, single acting rod seal.
- Long sealing lip compensates for radial inaccuracy or excentricity.
- Useable for long stroke lengths.
- Low break-away load after long standstills.
- Seal design tends to "stick-slip" effect.

Application:

Reciprocating pistons in hydraulic and pneumatic cylinders.
Replacement for seal designs (leather seals etc.) used in old cylinders.
Max. pressure 160 bar, max. speed 0.5 m/s.



Seal housing recommendation:

Tolerances	[mm]	
NL	+0.2	
NH	+0.2	
Ø NA	H10	
Ø NI	f 8	

Surface roughness	Rtmax [μ]	Ra [μ]
Bottom of groove	≤ 6.3	≤ 1.6
Face of groove	≤ 15	≤ 3

Sliding surface	Rtmax [μ]	Ra [μ]
PU, elastomeres	≤ 2.5	$\leq 0.1 - 0.5$
PTFE	≤ 2	$\leq 0.05 - 0.3$

Installation:

Clamped by flange.